

Supplementary Information

Fig. S1. The *A. sagrei* invasion of Florida shows an exponential pattern of range expansion.

The number of counties in Florida with established populations of *A. sagrei* has increased exponentially from initial introductions in the 1880's to recently established populations in 2000's ($Y = 0.163e^{0.038x}$; $P < 0.0001$; $R^2 = 0.912$)^{S1}. Dates were taken from the Florida Fish and

Wildlife Conservation Commission's website

(<http://wld.fwc.state.fl.us/critters/exotics/SpeciesNumberResults.asp?SPPNO=25>) and verified in the literature by the authors. Inconsistencies between the website and literature sources were resolved in favor of the literature.

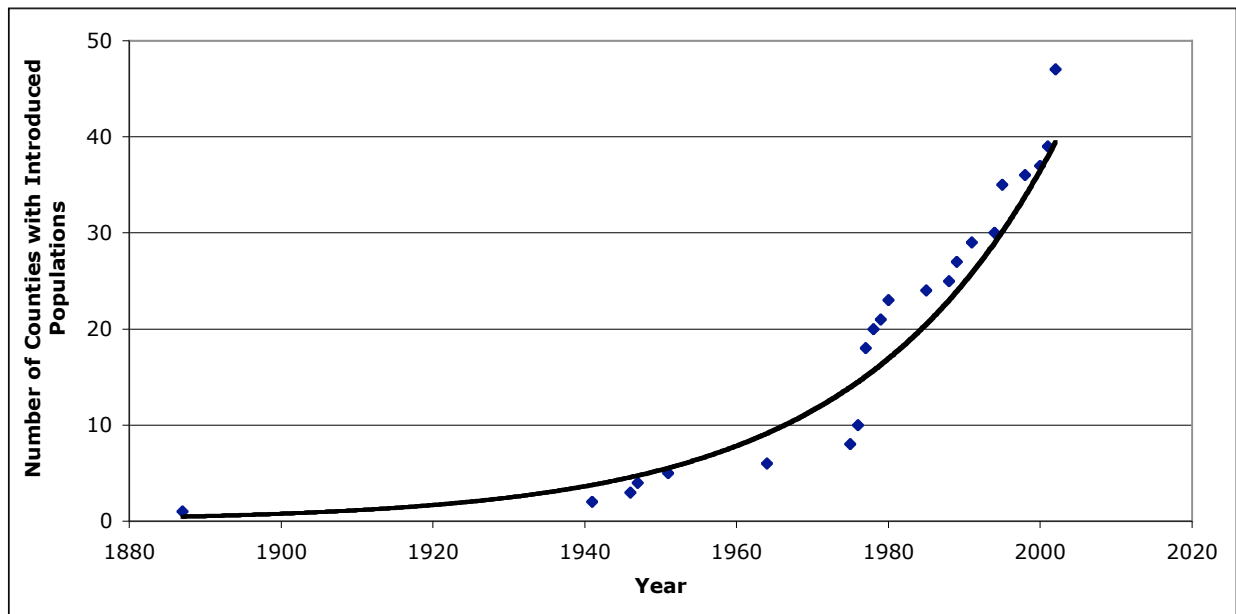


Fig. S2. Statistical parsimony networks connecting introduced and native-range haplotypes^{S2}.

Letters for each network correspond to native-range clades identified in Figs. 1 and 2. Each square is a unique haplotype with its size proportional to the haplotype's frequency; its color indicates the geographic origin of the sample, and black dots represent inferred mutational steps between haplotypes. The haplotype network from the Western Cuba clade (A) was divided into two sub-networks (1 & 2) to recognize the haplotype divergence within the network. All native-range haplotypes are from Cuba except for one haplotype from each of the Bahamas (F) and Belize (H). The one haplotype nested within the Bahamian clade (F) was too distantly related to the closest haplotypes sampled from San Salvador, Bahamas to form a haplotype network with 95% confidence.

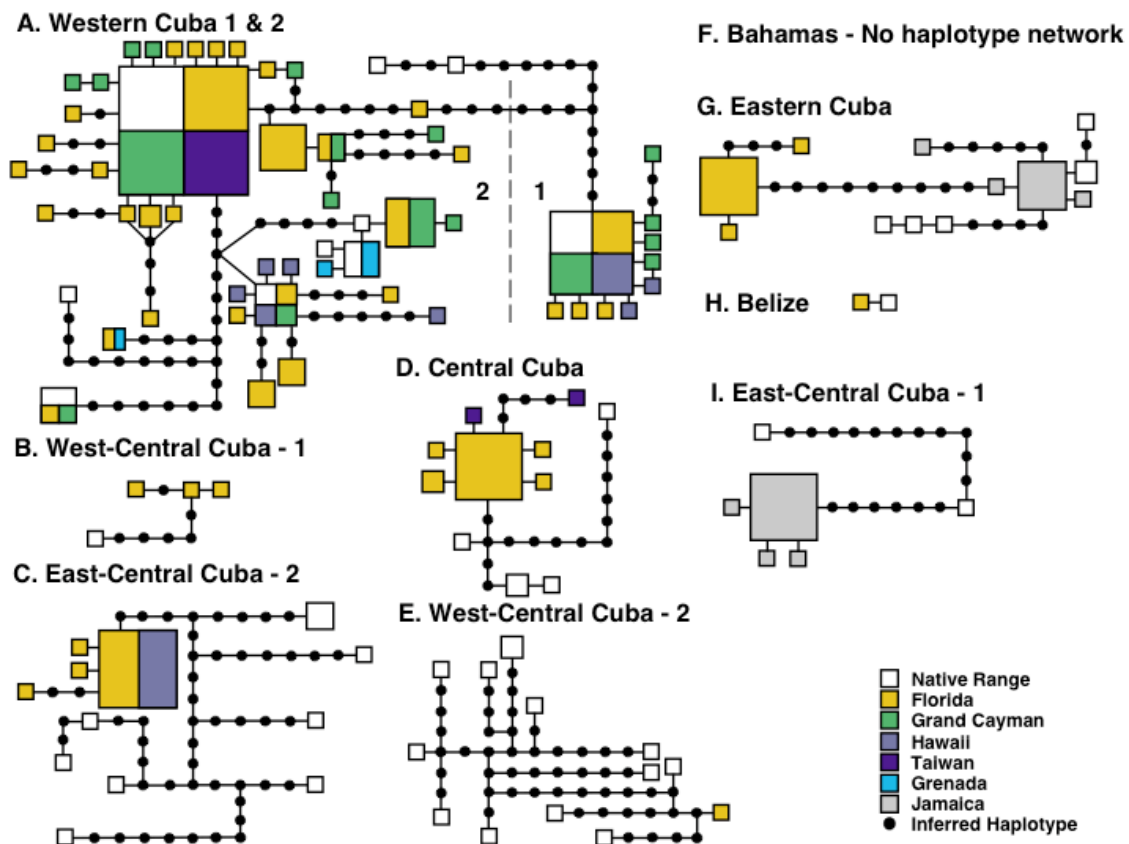


Fig. S3. The histogram shows the frequency of mean pairwise mtDNA sequence divergences within populations for introduced Florida and native Cuban populations^{S1,S3}.

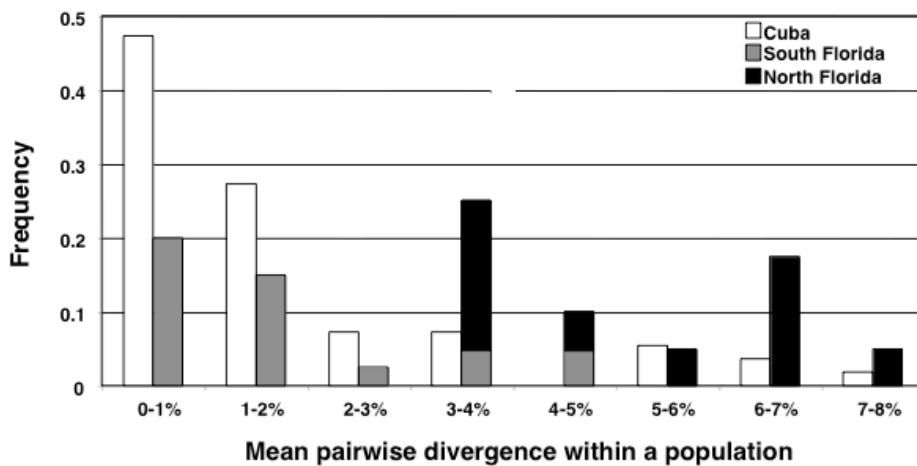


Table S1. Chronology of *A. sagrei* introductions to Jamaica, Florida (U.S.), Hawaii (U.S.), Grand Cayman, Taiwan, and Grenada with the approximate date of introduction and references for each locality. Dates for Florida were taken from the Florida Fish and Wildlife Conservation Commission's website (<http://wld.fwc.state.fl.us/critters/exotics/SpeciesNumberResults.asp?SPPNO=25>) and verified in the literature by the authors. Inconsistencies between the website and literature sources were resolved in favor of the literature.

Locality	County	Introduction date	References
Jamaica		Pre-1861	<i>S4</i>
Florida	Monroe	1887	<i>S5</i>
Florida	Palm Beach	1941	<i>S6</i>
Florida	Pinellas	1946	<i>S6</i>
Florida	Hillsborough	1947	<i>S6</i>
Florida	Dade	1951	<i>S7</i>
Florida	Broward	1964	<i>S8</i>
Florida	St. Johns	1975	<i>S9</i>
Florida	Collier	1976	<i>S10</i>
Florida	Glades	1976	<i>S11</i>
Florida	Highlands	1977	<i>S10</i>
Florida	Lee	1977	<i>S10, S12</i>
Florida	Manatee	1977	<i>S10</i>
Florida	Osceola	1977	<i>S10</i>
Florida	Pasco	1977	<i>S10</i>
Florida	Polk	1977	<i>S10</i>
Florida	Sarasota	1977	<i>S10</i>
Florida	St. Lucie	1977	<i>S13</i>
Florida	Levy	1978	<i>S12</i>
Florida	Orange	1978	<i>S10</i>
Florida	Marion	1979	<i>S10</i>
Florida	Alachua	1980	<i>S14</i>
Florida	Lake	1980	<i>S15</i>
Hawaii		1980	<i>S16</i>
Grand Cayman		1984	<i>S17</i>
Florida	Duval	1985	<i>S18</i>

Florida	Brevard	1988	<i>S19</i>
Florida	Bay	1989	<i>S20</i>
Florida	Volusia	1989	<i>S21</i>
Florida	Citrus	1991	<i>S22</i>
Florida	Columbia	1991	<i>S21</i>
Florida	Nassau	1994	<i>S23</i>
Florida	Baker	1995	<i>S21</i>
Florida	Flagler	1995	<i>S21</i>
Florida	Franklin	1995	<i>S24</i>
Florida	Hamilton	1995	<i>S21</i>
Florida	Putnam	1995	<i>S21</i>
Florida	Hardee	1998	<i>S25</i>
Florida	Taylor	2000	<i>S26</i>
Taiwan		2000	<i>S27</i>
Florida	Gilchrist	2001	<i>S26</i>
Florida	Martin	2001	<i>S26</i>
Florida	Bradford	2002	<i>S15</i>
Florida	De Soto	2002	<i>S15</i>
Florida	Dixie	2002	<i>S15</i>
Florida	Hendry	2002	<i>S15</i>
Florida	Hernando	2002	<i>S15</i>
Florida	Okeechobee	2002	<i>S15</i>
Florida	Suwannee	2002	<i>S15</i>
Florida	Union	2002	<i>S15</i>
Grenada		2002	<i>S28</i>

Table S2. Sampling of native and introduced *A. sagrei* populations for this study.

Locality	Number of populations	Number of individuals
Native Range:		
Cuba	57	255
Bahamas	9	43
Little Cayman	2	11
Cayman Brac	2	10
Belize	1	1
Introduced Range:		
Florida	40	199
Jamaica	8	35
Grand Cayman	6	29
Hawaii	3	13
Taiwan	1	10
Grenada	1	3
Total	130	609

Table S3. GenBank accession numbers for all unique sequences used in this study.

Species	Locality	Accession Number
<i>Anolis homolechis</i>	La Habana, Cuba	AY655164
<i>Anolis bremeri</i>	Las Canas, Cuba	AY655165
<i>Anolis bremeri</i>	Las Canas, Cuba	AY655166
<i>Anolis bremeri</i>	Pinar del Rio, Cuba	AY655167
<i>Anolis quadriocellifer</i>	El Cayuco, Cuba	AY655168
<i>Anolis quadriocellifer</i>	El Cayuco, Cuba	AY655169
<i>Anolis quadriocellifer</i>	El Cayuco, Cuba	AY655170
<i>Anolis quadriocellifer</i>	El Cayuco, Cuba	AY655171
<i>Anolis sagrei</i>	Playa Larga, Cuba	AY655172
<i>Anolis sagrei</i>	Playa Girón, Cuba	AY655173
<i>Anolis sagrei</i>	Topes de Collantes, Cuba	AY655174
<i>Anolis sagrei</i>	Topes de Collantes, Cuba	AY655175
<i>Anolis sagrei</i>	La Habana, Cuba	AY655176
<i>Anolis sagrei</i>	La Habana, Cuba	AY655177
<i>Anolis sagrei</i>	Soroa, Cuba	AY655178
<i>Anolis sagrei</i>	Soroa, Cuba	AY655179
<i>Anolis sagrei</i>	Soroa, Cuba	AY655180
<i>Anolis sagrei</i>	Soroa, Cuba	AY655181
<i>Anolis sagrei</i>	Soroa, Cuba	AY655182
<i>Anolis sagrei</i>	San Juan y Martinez, Cuba	AY655183
<i>Anolis sagrei</i>	San Juan y Martinez, Cuba	AY655184
<i>Anolis sagrei</i>	San Juan y Martinez, Cuba	AY655185
<i>Anolis sagrei</i>	Ciego de Ávila, Cuba	AY655186
<i>Anolis sagrei</i>	Ciego de Ávila, Cuba	AY655187
<i>Anolis sagrei</i>	Portillo, Cuba	AY655188
<i>Anolis sagrei</i>	Santiago de Cuba, Cuba	AY655189
<i>Anolis sagrei</i>	Santiago de Cuba, Cuba	AY655190
<i>Anolis sagrei</i>	San José de las Lajas, Cuba	AY655191
<i>Anolis sagrei</i>	San José de las Lajas, Cuba	AY655192
<i>Anolis sagrei</i>	San José de las Lajas, Cuba	AY655193
<i>Anolis sagrei</i>	San José de las Lajas, Cuba	AY655194
<i>Anolis sagrei</i>	El Cenote, Cuba	AY655195
<i>Anolis sagrei</i>	El Cenote, Cuba	AY655196
<i>Anolis sagrei</i>	El Cenote, Cuba	AY655197
<i>Anolis sagrei</i>	El Cenote, Cuba	AY655198
<i>Anolis sagrei</i>	El Cenote, Cuba	AY655199
<i>Anolis sagrei</i>	Cardenas, Cuba	AY655200
<i>Anolis sagrei</i>	Cardenas, Cuba	AY655201

<i>Anolis sagrei</i>	Cardenas, Cuba	AY655202
<i>Anolis sagrei</i>	Cardenas, Cuba	AY655203
<i>Anolis sagrei</i>	Cardenas, Cuba	AY655204
<i>Anolis sagrei</i>	Santo Tomás, Cuba	AY655205
<i>Anolis sagrei</i>	Santo Tomás, Cuba	AY655206
<i>Anolis sagrei</i>	Santo Tomás, Cuba	AY655207
<i>Anolis sagrei</i>	Santo Tomás, Cuba	AY655208
<i>Anolis sagrei</i>	Juragua, Cuba	AY655209
<i>Anolis sagrei</i>	Juragua, Cuba	AY655210
<i>Anolis sagrei</i>	Juragua, Cuba	AY655211
<i>Anolis sagrei</i>	Perico, Cuba	AY655212
<i>Anolis sagrei</i>	Perico, Cuba	AY655213
<i>Anolis sagrei</i>	Perico, Cuba	AY655214
<i>Anolis sagrei</i>	Perico, Cuba	AY655215
<i>Anolis sagrei</i>	N. Aguada, Cuba	AY655216
<i>Anolis sagrei</i>	N. Aguada, Cuba	AY655217
<i>Anolis sagrei</i>	N. Aguada, Cuba	AY655218
<i>Anolis sagrei</i>	Ciego de Ávila, Cuba	AY655219
<i>Anolis sagrei</i>	Ciego de Ávila, Cuba	AY655220
<i>Anolis sagrei</i>	Ciego de Ávila, Cuba	AY655221
<i>Anolis sagrei</i>	Ciego de Ávila, Cuba	AY655222
<i>Anolis sagrei</i>	N. Morón, Cuba	AY655223
<i>Anolis sagrei</i>	N. Morón, Cuba	AY655224
<i>Anolis sagrei</i>	N. Morón, Cuba	AY655225
<i>Anolis sagrei</i>	W. Florida, Cuba	AY655226
<i>Anolis sagrei</i>	W. Florida, Cuba	AY655227
<i>Anolis sagrei</i>	W. Florida, Cuba	AY655228
<i>Anolis sagrei</i>	S. Camagüey, Cuba	AY655229
<i>Anolis sagrei</i>	S. Camagüey, Cuba	AY655230
<i>Anolis sagrei</i>	S. Camagüey, Cuba	AY655231
<i>Anolis sagrei</i>	S. Camagüey, Cuba	AY655232
<i>Anolis sagrei</i>	S. Camagüey, Cuba	AY655233
<i>Anolis sagrei</i>	Minas, Cuba	AY655234
<i>Anolis sagrei</i>	Minas, Cuba	AY655235
<i>Anolis sagrei</i>	Minas, Cuba	AY655236
<i>Anolis sagrei</i>	Minas, Cuba	AY655237
<i>Anolis sagrei</i>	Cascorro, Cuba	AY655238
<i>Anolis sagrei</i>	Cascorro, Cuba	AY655239
<i>Anolis sagrei</i>	Cascorro, Cuba	AY655240
<i>Anolis sagrei</i>	Cascorro, Cuba	AY655241
<i>Anolis sagrei</i>	San Blas, Cuba	AY655242

<i>Anolis sagrei</i>	San Blas, Cuba	AY655243
<i>Anolis sagrei</i>	San Blas, Cuba	AY655244
<i>Anolis sagrei</i>	Holguín, Cuba	AY655245
<i>Anolis sagrei</i>	Holguín, Cuba	AY655246
<i>Anolis sagrei</i>	Holguín, Cuba	AY655247
<i>Anolis sagrei</i>	Holguín, Cuba	AY655248
<i>Anolis sagrei</i>	Holguín, Cuba	AY655249
<i>Anolis sagrei</i>	Cauto, Cuba	AY655250
<i>Anolis sagrei</i>	Cauto, Cuba	AY655251
<i>Anolis sagrei</i>	Cauto, Cuba	AY655252
<i>Anolis sagrei</i>	Cauto, Cuba	AY655253
<i>Anolis sagrei</i>	Cauto, Cuba	AY655254
<i>Anolis sagrei</i>	Jaguani, Cuba	AY655255
<i>Anolis sagrei</i>	W. Bayamo, Cuba	AY655256
<i>Anolis sagrei</i>	W. Bayamo, Cuba	AY655257
<i>Anolis sagrei</i>	W. Bayamo, Cuba	AY655258
<i>Anolis sagrei</i>	N. Media Luna, Cuba	AY655259
<i>Anolis sagrei</i>	N. Media Luna, Cuba	AY655260
<i>Anolis sagrei</i>	N. Media Luna, Cuba	AY655261
<i>Anolis sagrei</i>	N. Media Luna, Cuba	AY655262
<i>Anolis sagrei</i>	N. Media Luna, Cuba	AY655263
<i>Anolis sagrei</i>	Portillo, Cuba	AY655264
<i>Anolis sagrei</i>	Portillo, Cuba	AY655265
<i>Anolis sagrei</i>	Portillo, Cuba	AY655266
<i>Anolis sagrei</i>	Limoncito, Cuba	AY655267
<i>Anolis sagrei</i>	Limoncito, Cuba	AY655268
<i>Anolis sagrei</i>	Limoncito, Cuba	AY655269
<i>Anolis sagrei</i>	W. Sigua, Cuba	AY655270
<i>Anolis sagrei</i>	W. Sigua, Cuba	AY655271
<i>Anolis sagrei</i>	W. Sigua, Cuba	AY655272
<i>Anolis sagrei</i>	W. Sigua, Cuba	AY655273
<i>Anolis sagrei</i>	Guantánamo, Cuba	AY655274
<i>Anolis sagrei</i>	Guantánamo, Cuba	AY655275
<i>Anolis sagrei</i>	Guantánamo, Cuba	AY655276
<i>Anolis sagrei</i>	Maisí, Cuba	AY655277
<i>Anolis sagrei</i>	Maisí, Cuba	AY655278
<i>Anolis sagrei</i>	El Yunque, Cuba	AY655279
<i>Anolis sagrei</i>	Moa, Cuba	AY655280
<i>Anolis sagrei</i>	Moa, Cuba	AY655281
<i>Anolis sagrei</i>	Moa, Cuba	AY655282
<i>Anolis sagrei</i>	Moa, Cuba	AY655283

<i>Anolis sagrei</i>	W. Mayari, Cuba	AY655284
<i>Anolis sagrei</i>	W. Mayari, Cuba	AY655285
<i>Anolis sagrei</i>	W. Mayari, Cuba	AY655286
<i>Anolis sagrei</i>	Gibara, Cuba	AY655287
<i>Anolis sagrei</i>	Gibara, Cuba	AY655288
<i>Anolis sagrei</i>	Puerto Padre, Cuba	AY655289
<i>Anolis sagrei</i>	Puerto Padre, Cuba	AY655290
<i>Anolis sagrei</i>	Puerto Padre, Cuba	AY655291
<i>Anolis sagrei</i>	Las Tunas, Cuba	AY655292
<i>Anolis sagrei</i>	Las Tunas, Cuba	AY655293
<i>Anolis sagrei</i>	Las Tunas, Cuba	AY655294
<i>Anolis sagrei</i>	Las Tunas, Cuba	AY655295
<i>Anolis sagrei</i>	Las Tunas, Cuba	AY655296
<i>Anolis sagrei</i>	Rio Cauto, Cuba	AY655297
<i>Anolis sagrei</i>	Rio Cauto, Cuba	AY655298
<i>Anolis sagrei</i>	Rio Cauto, Cuba	AY655299
<i>Anolis sagrei</i>	Rio Cauto, Cuba	AY655300
<i>Anolis sagrei</i>	Rio Cauto, Cuba	AY655301
<i>Anolis sagrei</i>	Jobabo, Cuba	AY655302
<i>Anolis sagrei</i>	Jobabo, Cuba	AY655303
<i>Anolis sagrei</i>	Jobabo, Cuba	AY655304
<i>Anolis sagrei</i>	Vertientes, Cuba	AY655305
<i>Anolis sagrei</i>	Vertientes, Cuba	AY655306
<i>Anolis sagrei</i>	Vertientes, Cuba	AY655307
<i>Anolis sagrei</i>	Vertientes, Cuba	AY655308
<i>Anolis sagrei</i>	Vertientes, Cuba	AY655309
<i>Anolis sagrei</i>	S. Esmerelda, Cuba	AY655310
<i>Anolis sagrei</i>	S. Esmerelda, Cuba	AY655311
<i>Anolis sagrei</i>	S. Esmerelda, Cuba	AY655312
<i>Anolis sagrei</i>	Sancti Spíritus, Cuba	AY655313
<i>Anolis sagrei</i>	Sancti Spíritus, Cuba	AY655314
<i>Anolis sagrei</i>	Sancti Spíritus, Cuba	AY655315
<i>Anolis sagrei</i>	Caracusey, Cuba	AY655316
<i>Anolis sagrei</i>	Caracusey, Cuba	AY655317
<i>Anolis sagrei</i>	Caracusey, Cuba	AY655318
<i>Anolis sagrei</i>	W. Trinidad, Cuba	AY655319
<i>Anolis sagrei</i>	W. Trinidad, Cuba	AY655320
<i>Anolis sagrei</i>	W. Trinidad, Cuba	AY655321
<i>Anolis sagrei</i>	W. Trinidad, Cuba	AY655322
<i>Anolis sagrei</i>	W. Trinidad, Cuba	AY655323
<i>Anolis sagrei</i>	S. Manicargua, Cuba	AY655324

<i>Anolis sagrei</i>	S. Manicargua, Cuba	AY655325
<i>Anolis sagrei</i>	S. Manicargua, Cuba	AY655326
<i>Anolis sagrei</i>	S. Manicargua, Cuba	AY655327
<i>Anolis sagrei</i>	Sagua la Grande, Cuba	AY655328
<i>Anolis sagrei</i>	Sagua la Grande, Cuba	AY655329
<i>Anolis sagrei</i>	Sagua la Grande, Cuba	AY655330
<i>Anolis sagrei</i>	Sagua la Grande, Cuba	AY655331
<i>Anolis sagrei</i>	Corralillo, Cuba	AY655332
<i>Anolis sagrei</i>	Corralillo, Cuba	AY655333
<i>Anolis sagrei</i>	Corralillo, Cuba	AY655334
<i>Anolis sagrei</i>	Corralillo, Cuba	AY655335
<i>Anolis sagrei</i>	Corralillo, Cuba	AY655336
<i>Anolis sagrei</i>	Santo Domingo, Cuba	AY655337
<i>Anolis sagrei</i>	Santo Domingo, Cuba	AY655338
<i>Anolis sagrei</i>	Santo Domingo, Cuba	AY655339
<i>Anolis sagrei</i>	Santo Domingo, Cuba	AY655340
<i>Anolis sagrei</i>	Santo Domingo, Cuba	AY655341
<i>Anolis sagrei</i>	Caibarién, Cuba	AY655342
<i>Anolis sagrei</i>	Caibarién, Cuba	AY655343
<i>Anolis sagrei</i>	Caibarién, Cuba	AY655344
<i>Anolis sagrei</i>	Caibarién, Cuba	AY655345
<i>Anolis sagrei</i>	E. Yaguajay, Cuba	AY655346
<i>Anolis sagrei</i>	E. Yaguajay, Cuba	AY655347
<i>Anolis sagrei</i>	E. Yaguajay, Cuba	AY655348
<i>Anolis sagrei</i>	E. Yaguajay, Cuba	AY655349
<i>Anolis sagrei</i>	E. Yaguajay, Cuba	AY655350
<i>Anolis sagrei</i>	Santa Clara, Cuba	AY655351
<i>Anolis sagrei</i>	Santa Clara, Cuba	AY655352
<i>Anolis sagrei</i>	Santa Clara, Cuba	AY655353
<i>Anolis sagrei</i>	Santa Clara, Cuba	AY655354
<i>Anolis sagrei</i>	Santa Clara, Cuba	AY655355
<i>Anolis sagrei</i>	Jicarita, Cuba	AY655356
<i>Anolis sagrei</i>	Jicarita, Cuba	AY655357
<i>Anolis sagrei</i>	Jicarita, Cuba	AY655358
<i>Anolis sagrei</i>	Jicarita, Cuba	AY655359
<i>Anolis sagrei</i>	Jicarita, Cuba	AY655360
<i>Anolis sagrei</i>	Mariel, Cuba	AY655361
<i>Anolis sagrei</i>	Mariel, Cuba	AY655362
<i>Anolis sagrei</i>	Mulata, Cuba	AY655363
<i>Anolis sagrei</i>	Mulata, Cuba	AY655364
<i>Anolis sagrei</i>	Mulata, Cuba	AY655365

<i>Anolis sagrei</i>	Mulata, Cuba	AY655366
<i>Anolis sagrei</i>	Santa Lucia, Cuba	AY655367
<i>Anolis sagrei</i>	Santa Lucia, Cuba	AY655368
<i>Anolis sagrei</i>	Santa Lucia, Cuba	AY655369
<i>Anolis sagrei</i>	Cortes, Cuba	AY655370
<i>Anolis sagrei</i>	Cortes, Cuba	AY655371
<i>Anolis sagrei</i>	Crooked Island, Bahamas	AY655372
<i>Anolis sagrei</i>	Crooked Island, Bahamas	AY655373
<i>Anolis sagrei</i>	San Salvador, Bahamas	AY655374
<i>Anolis sagrei</i>	San Salvador, Bahamas	AY655375
<i>Anolis sagrei</i>	San Salvador, Bahamas	AY655376
<i>Anolis sagrei</i>	San Salvador, Bahamas	AY655377
<i>Anolis sagrei</i>	Staniel Cay, Bahamas	AY655378
<i>Anolis sagrei</i>	Staniel Cay, Bahamas	AY655379
<i>Anolis sagrei</i>	Staniel Cay, Bahamas	AY655380
<i>Anolis sagrei</i>	Staniel Cay, Bahamas	AY655381
<i>Anolis sagrei</i>	Staniel Cay, Bahamas	AY655382
<i>Anolis sagrei</i>	South Bimini, Bahamas	AY655383
<i>Anolis sagrei</i>	South Bimini, Bahamas	AY655384
<i>Anolis sagrei</i>	South Bimini, Bahamas	AY655385
<i>Anolis sagrei</i>	Berry Islands, Bahamas	AY655386
<i>Anolis sagrei</i>	Berry Islands, Bahamas	AY655387
<i>Anolis sagrei</i>	Berry Islands, Bahamas	AY655388
<i>Anolis sagrei</i>	Berry Islands, Bahamas	AY655389
<i>Anolis sagrei</i>	South Andros, Bahamas	AY655390
<i>Anolis sagrei</i>	South Andros, Bahamas	AY655391
<i>Anolis sagrei</i>	South Andros, Bahamas	AY655392
<i>Anolis sagrei</i>	South Andros, Bahamas	AY655393
<i>Anolis sagrei</i>	Great Abaco, Bahamas	AY655394
<i>Anolis sagrei</i>	Great Abaco, Bahamas	AY655395
<i>Anolis sagrei</i>	Great Abaco, Bahamas	AY655396
<i>Anolis sagrei</i>	Great Abaco, Bahamas	AY655397
<i>Anolis sagrei</i>	Great Abaco, Bahamas	AY655398
<i>Anolis sagrei</i>	Grand Bahama, Bahamas	AY655399
<i>Anolis sagrei</i>	Grand Bahama, Bahamas	AY655400
<i>Anolis sagrei</i>	Grand Bahama, Bahamas	AY655401
<i>Anolis sagrei</i>	Grand Bahama, Bahamas	AY655402
<i>Anolis sagrei</i>	Grand Bahama, Bahamas	AY655403
<i>Anolis sagrei</i>	Exuma, Bahamas	AY655404
<i>Anolis sagrei</i>	Exuma, Bahamas	AY655405
<i>Anolis sagrei</i>	Exuma, Bahamas	AY655406

<i>Anolis sagrei</i>	Exuma, Bahamas	AY655407
<i>Anolis sagrei</i>	Exuma, Bahamas	AY655408
<i>Anolis sagrei</i>	Cayman Brac	AY655409
<i>Anolis sagrei</i>	Cayman Brac	AY655410
<i>Anolis sagrei</i>	Cayman Brac	AY655411
<i>Anolis sagrei</i>	Cayman Brac	AY655412
<i>Anolis sagrei</i>	Cayman Brac	AY655413
<i>Anolis sagrei</i>	Cayman Brac	AY655414
<i>Anolis sagrei</i>	Cayman Brac	AY655415
<i>Anolis sagrei</i>	Cayman Brac	AY655416
<i>Anolis sagrei</i>	Cayman Brac	AY655417
<i>Anolis sagrei</i>	Cayman Brac	AY655418
<i>Anolis sagrei</i>	Little Cayman	AY655419
<i>Anolis sagrei</i>	Little Cayman	AY655420
<i>Anolis sagrei</i>	Little Cayman	AY655421
<i>Anolis sagrei</i>	Little Cayman	AY655422
<i>Anolis sagrei</i>	Little Cayman	AY655423
<i>Anolis sagrei</i>	Little Cayman	AY655424
<i>Anolis sagrei</i>	Little Cayman	AY655425
<i>Anolis sagrei</i>	Little Cayman	AY655426
<i>Anolis sagrei</i>	Little Cayman	AY655427
<i>Anolis sagrei</i>	Belize	AY655428
<i>Anolis sagrei</i>	St. Catherine, Jamaica	AY655429
<i>Anolis sagrei</i>	Portland, Jamaica	AY655430
<i>Anolis sagrei</i>	Manchester, Jamaica	AY655431
<i>Anolis sagrei</i>	Westmoreland, Jamaica	AY655432
<i>Anolis sagrei</i>	Westmoreland, Jamaica	AY655433
<i>Anolis sagrei</i>	Tampa, Florida	AY655434
<i>Anolis sagrei</i>	Tampa, Florida	AY655435
<i>Anolis sagrei</i>	Tampa, Florida	AY655436
<i>Anolis sagrei</i>	Tampa, Florida	AY655437
<i>Anolis sagrei</i>	Tampa, Florida	AY655438
<i>Anolis sagrei</i>	Tampa, Florida	AY655439
<i>Anolis sagrei</i>	Tampa, Florida	AY655440
<i>Anolis sagrei</i>	Ocala, Florida	AY655441
<i>Anolis sagrei</i>	Port Richey, Florida	AY655442
<i>Anolis sagrei</i>	St. Petersburg, Florida	AY655443
<i>Anolis sagrei</i>	St. Petersburg, Florida	AY655444
<i>Anolis sagrei</i>	St. Petersburg, Florida	AY655445
<i>Anolis sagrei</i>	Fort Myers, Florida	AY655446
<i>Anolis sagrei</i>	Fort Myers, Florida	AY655447

<i>Anolis sagrei</i>	Naples, Florida	AY655448
<i>Anolis sagrei</i>	Big Pine Key, Florida	AY655449
<i>Anolis sagrei</i>	Big Pine Key, Florida	AY655450
<i>Anolis sagrei</i>	Big Pine Key, Florida	AY655451
<i>Anolis sagrei</i>	Lower Matecumbe Key, Florida	AY655452
<i>Anolis sagrei</i>	Plantation Key, Florida	AY655453
<i>Anolis sagrei</i>	Okeechobee, Florida	AY655454
<i>Anolis sagrei</i>	Cape Canaveral, Florida	AY655455
<i>Anolis sagrei</i>	Stock Island, Florida	AY655456
<i>Anolis sagrei</i>	Red Road, Florida	AY655457
<i>Anolis sagrei</i>	Pahokee, Florida	AY655458
<i>Anolis sagrei</i>	Lake Worth, Florida	AY655459
<i>Anolis sagrei</i>	Lake Worth, Florida	AY655460
<i>Anolis sagrei</i>	Miami, Florida	AY655461
<i>Anolis sagrei</i>	Grenada	AY655462
<i>Anolis sagrei</i>	Grenada	AY655463
<i>Anolis sagrei</i>	Taiwan	AY655464
<i>Anolis sagrei</i>	Taiwan	AY655465
<i>Anolis sagrei</i>	Turtle Farm, Grand Cayman	AY655466
<i>Anolis sagrei</i>	Turtle Farm, Grand Cayman	AY655467
<i>Anolis sagrei</i>	Turtle Farm, Grand Cayman	AY655468
<i>Anolis sagrei</i>	South Coast, Grand Cayman	AY655469
<i>Anolis sagrei</i>	South Coast, Grand Cayman	AY655470
<i>Anolis sagrei</i>	South Coast, Grand Cayman	AY655471
<i>Anolis sagrei</i>	Frank Sound, Grand Cayman	AY655472
<i>Anolis sagrei</i>	Sunnyfield, Grand Cayman	AY655473
<i>Anolis sagrei</i>	Sunnyfield, Grand Cayman	AY655474
<i>Anolis sagrei</i>	Cayman Kai, Grand Cayman	AY655475
<i>Anolis sagrei</i>	Cayman Kai, Grand Cayman	AY655476
<i>Anolis sagrei</i>	Cayman Kai, Grand Cayman	AY655477
<i>Anolis sagrei</i>	George Town, Grand Cayman	AY655478
<i>Anolis sagrei</i>	Lanikai, Hawaii	AY655479
<i>Anolis sagrei</i>	Hawaii Kai, Hawaii	AY655480
<i>Anolis sagrei</i>	Hawaii Kai, Hawaii	AY655481
<i>Anolis sagrei</i>	Lanikai, Hawaii	AY655482
<i>Anolis sagrei</i>	Lanikai, Hawaii	AY655483
<i>Anolis sagrei</i>	Lanikai, Hawaii	AY655484

Supplementary Information References and Notes:

- S1. SAS Institute, *JMP ver. 5.1* (SAS Institute, Cary, 2004)
- S2. Clement, M., Posada, D. & Crandall, K. A. TCS: a computer program to estimate gene genealogies. *Mol. Ecol.* **9**, 1657-1659 (2000).
- S3. Schneider, S., Roessli, D. & Excoffier, L. *Arlequin ver. 2.0: a software for population genetics data analysis* (Genetics and Biometry Laboratory, University of Geneva, Switzerland, 2000).
- S4. Losos, J. B., *pers. obs.*, National Museum of Natural History, Smithsonian Institution. It is unclear whether Jamaica was colonized naturally or resulted from human-mediated introductions, or was a combination of both.
- S5. Garman, S. On West Indian Iguanidae and on West Indian Scincidae in the collection of the Museum of Comparative Zoology at Cambridge, Mass., U.S.A. *Bull. Essex Inst.* **19**, 25-50 (1887).
- S6. Oliver, J. A. *Anolis sagrei* in Florida. *Copeia* **1950**, 55-56 (1950).
- S7. Bell, L. N. Notes on three subspecies of the lizard *Anolis sagrei* in southern Florida. *Copeia* **1953**, 63 (1953).
- S8. King, F. W. & Krakauer, T. The exotic herpetofauna of southeast Florida. *Quart. J. FL Acad. Sci.* **29**, 144-154 (1966).
- S9. Meylan, P. A. *Hemidactylus turcicus* (Mediterranean gecko). *Herpetol. Rev.* **8**, 39 (1977).
- S10. Godley, J. S., Lohrer, F. E., Layne, J. N. & Rossi, J. Distributional status of an introduced lizard in Florida: *Anolis sagrei*. *Herpetol. Rev.* **12**, 84-86 (1981).
- S11. Corwin, C. M., Linzey, A. V. & Linzey, D. W. *Anolis sagrei sagrei* (Cuban brown anole). *Herpetol. Rev.* **8**, 84 (1977).

- S12. Funk, R. S. & Moll, D. *Anolis sagrei* (Cuban brown anole). *Herpetol. Rev.* **10**, 102 (1979).
- S13. Myers, S. *Anolis sagrei* (brown anole). *Herpetol. Rev.* **9**, 107-108 (1978).
- S14. Wygoda, M. L. & Bain, J. R. *Anolis sagrei* (Cuban brown anole). *Herpetol. Rev.* **11**, 115 (1980).
- S15. Campbell, T. S. The introduced brown anole (*Anolis sagrei*) occurs in every county in peninsular Florida. *Herpetol. Rev.* **34**, 173-174 (2003).
- S16. McKeown, S. *A Field Guide to Reptiles and Amphibians in the Hawaiian Islands* (Diamond Head, Los Osos, CA, 1996).
- S17. Minton, S. A. & Minton, M. R. *Anolis sagrei* (brown anole). *Herpetol. Rev.* **15**, 77 (1984).
- S18. Lee, J. C. *Anolis sagrei* in Florida: phenetics of a colonizing species I. Meristic characters. *Copeia* **1985**, 182-194 (1985).
- S19. Cochran, P. A. *Anolis sagrei* (brown anole). *Herpetol. Rev.* **21**, 22 (1990).
- S20. Means, D. B. *Anolis sagrei* (brown anole). *Herpetol. Rev.* **21**, 96 (1990).
- S21. Campbell, T. S. Northern range expansion of the brown anole (*Anolis sagrei*) in Florida and Georgia. *Herpetol. Rev.* **27**, 155-157 (1996).
- S22. Stevenson, D. & Crowe, D. *Anolis sagrei* (brown anole). *Herpetol. Rev.* **23**, 89 (1992).
- S23. Campbell, T. S. & Hammontree, J. T. *Anolis sagrei* (brown anole). *Herpetol. Rev.* **26**, 107 (1995).
- S24. Means, D. B. *Anolis sagrei* (brown anole). *Herpetol. Rev.* **27**, 151-152 (1996).
- S25. Christman, S. P. *et al.* New records of amphibians and reptiles from Hardee County, Florida. *Herpetol. Rev.* **31**, 116-117 (2000).
- S26. Townsend, J. H., Krysko, K. L., Reppas, A. T. & Sheehy, III, C. M. Noteworthy records for introduced reptiles and amphibians from Florida, USA. *Herpetol. Rev.* **33**, 75 (2002).

- S27. Norval, G., Mao, J-J., Chu, H-P. & Chen, L-C. A new record of an introduced species, the brown anole (*Anolis sagrei*) in Taiwan. *Zool. Stud.* **41**, 332-336 (2002).
- S28. Greene, B. T., Yorks, D. T., Parmerlee, J. S., Powell, R. & Henderson, R. W. Discovery of *Anolis sagrei* in Grenada with comments of its potential impact on native anoles. *Carib. J. Sci.* **38**, 270-272 (2002).